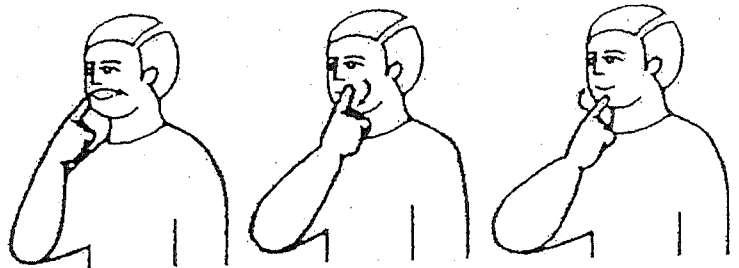


CORPO

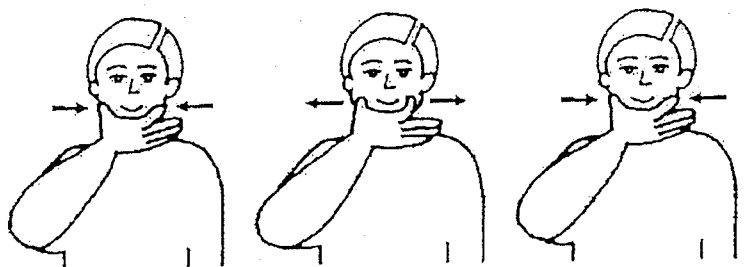
BARRIGA



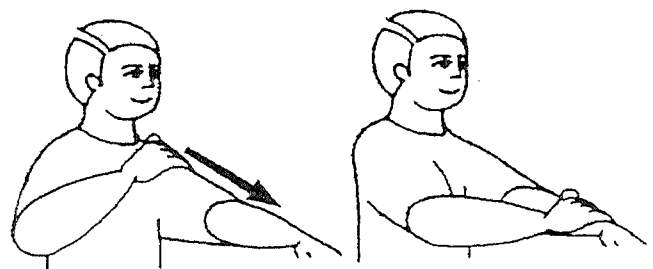
BOCA



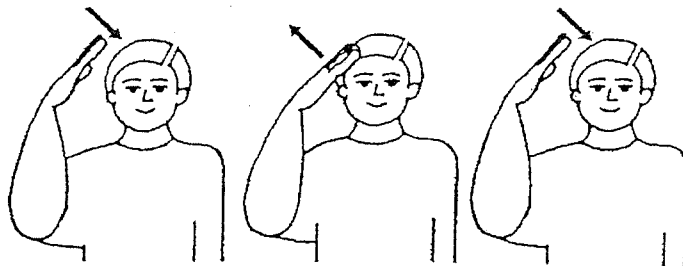
BOCHECHA



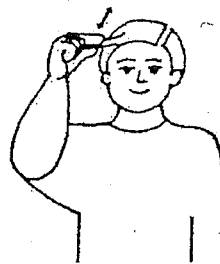
BRAÇO



CABEÇA



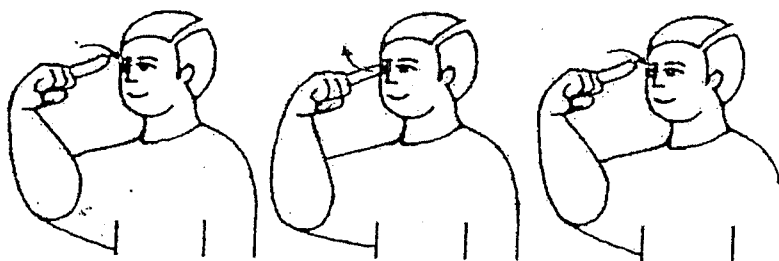
CABELO



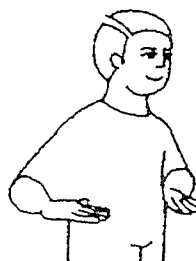
CÉREBRO



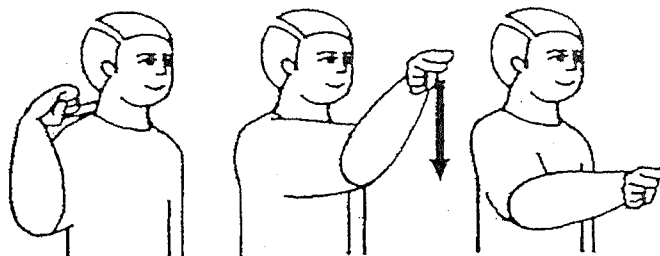
CÍLIOS



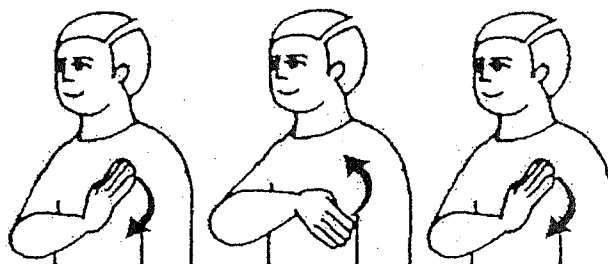
CINTURA



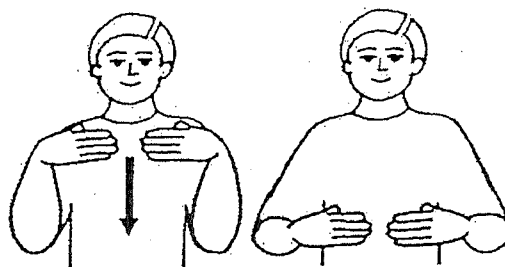
COLUNA VERTEBAL



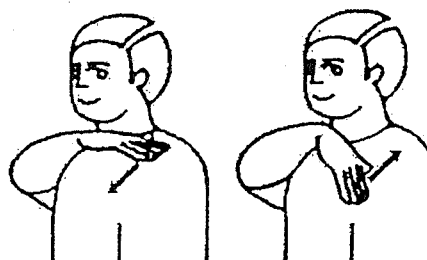
CORAÇÃO



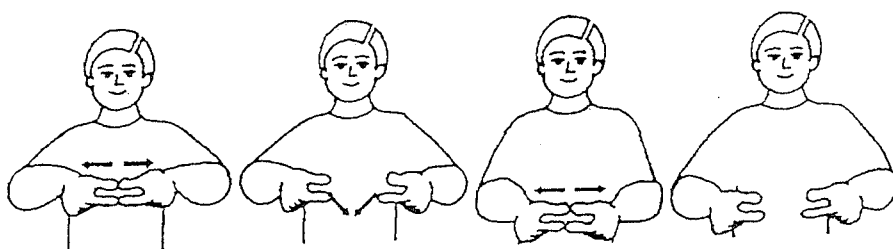
CORPO



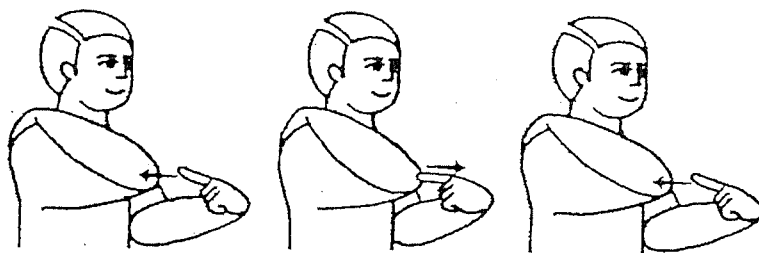
COSTAS



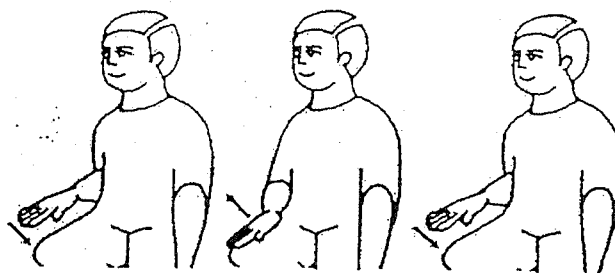
COSTELA



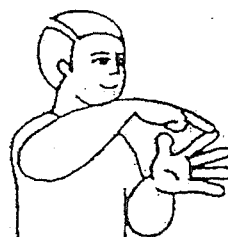
COTOVELO



COXA



**DEDO DA
MÃO**



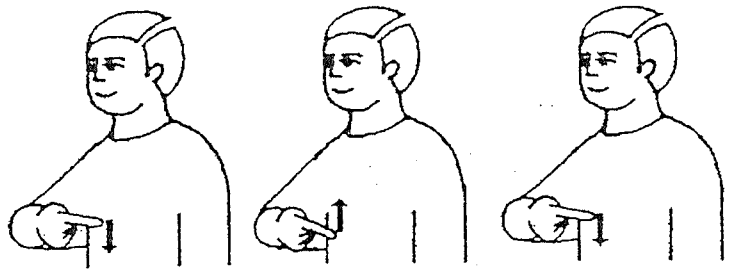
**DEDO DO
PÉ**



DENTE



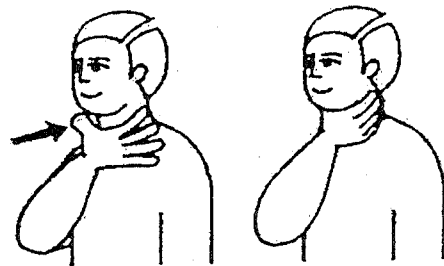
ESTOMAGO



FIGADO



GARGANTA



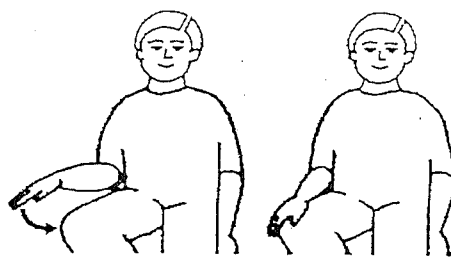
GLÚTEO



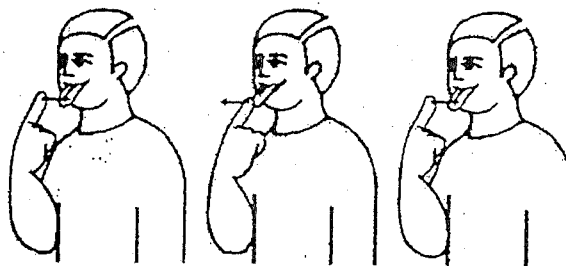
INTESTINO



JOELHO



LINGUA



MAMAS

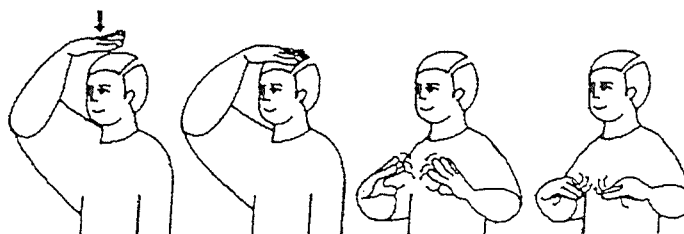


MÃO

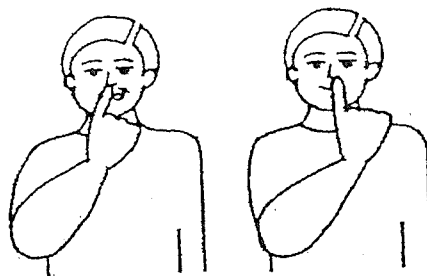


MOLEIRA

"bebê" +



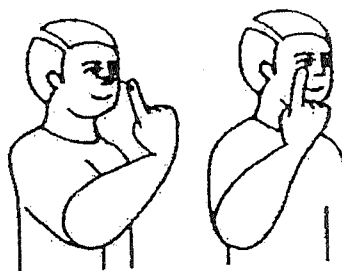
NARINA



NARIZ



OLHO



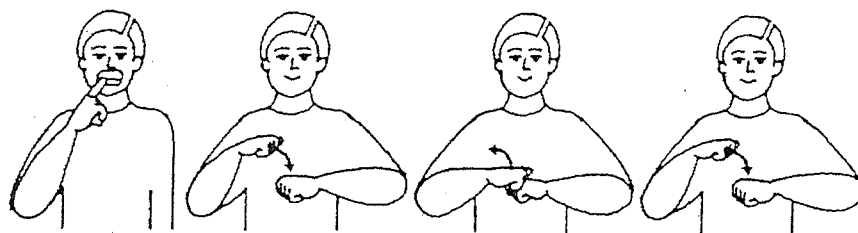
OMBRO



ORELHA



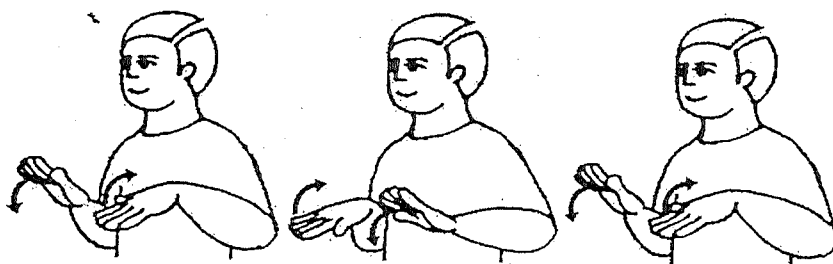
OSSOS



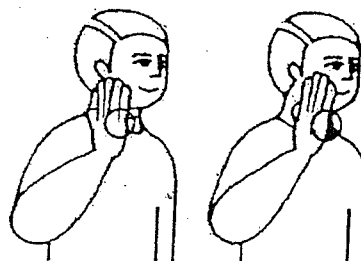
PÁLPEBRAS



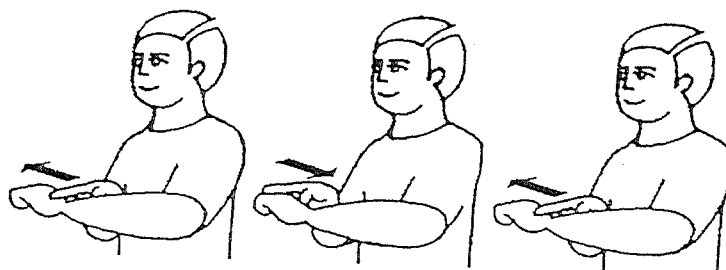
PÉ



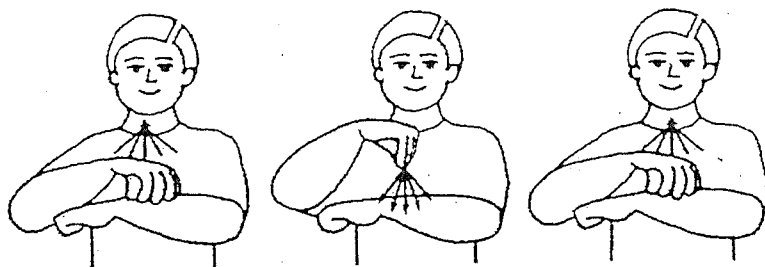
PELE



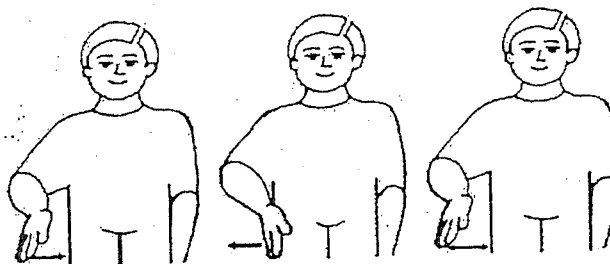
PELE



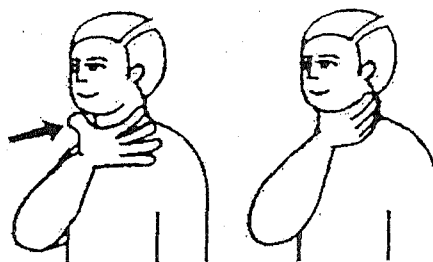
PELO



PERNA



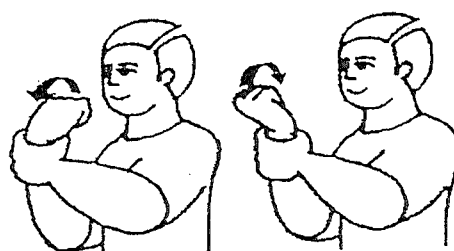
PESCOÇO



PULMÃO



PULSO

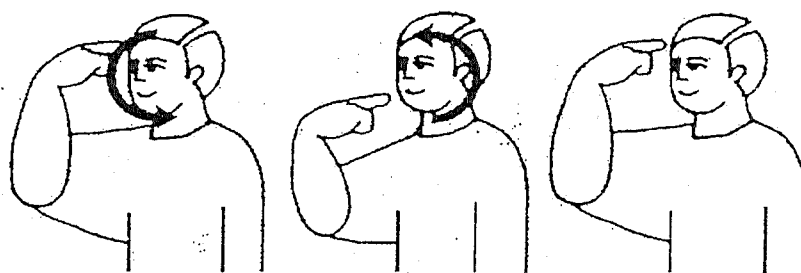


QUEIXO

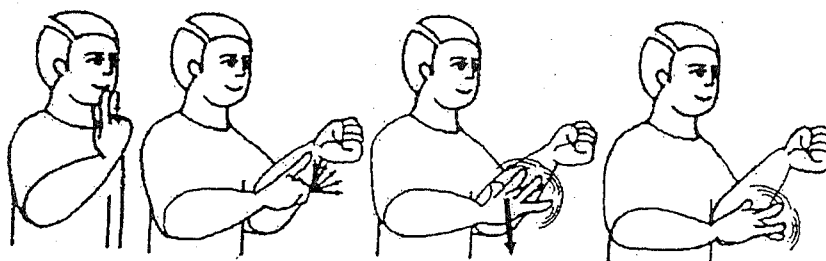


(Queixa)

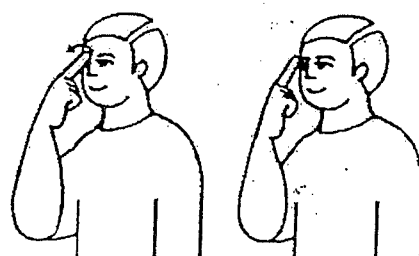
ROSTO



SANGUE



SOMBRANCELHA



UNHA

